



📍 Marina Trogir - SCT, Croatia

# Fountaine Pajot Saba 50 | Royal Cracow (crewed)

(ID: 7222)

Catamaran Fountaine Pajot Saba 50 "Royal Cracow (crewed)" is located in Marina Trogir - SCT, Croatia. Built in year 2016, it provides accommodation for 12 people in 6 + 1 cabins, with 6 toilets and shower(s).

## Specification

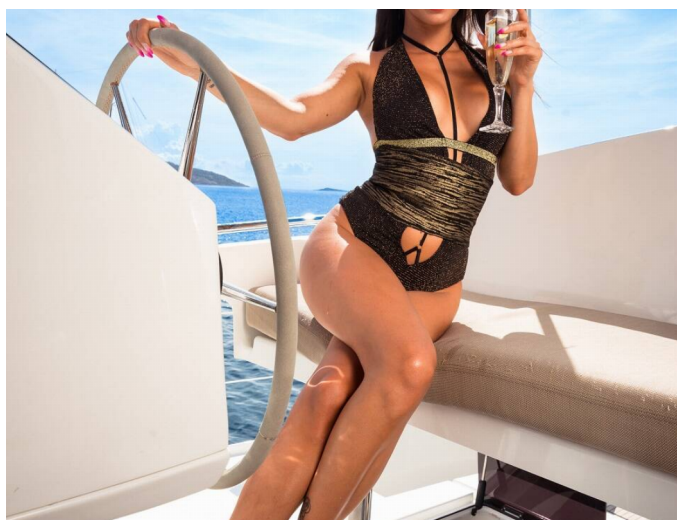
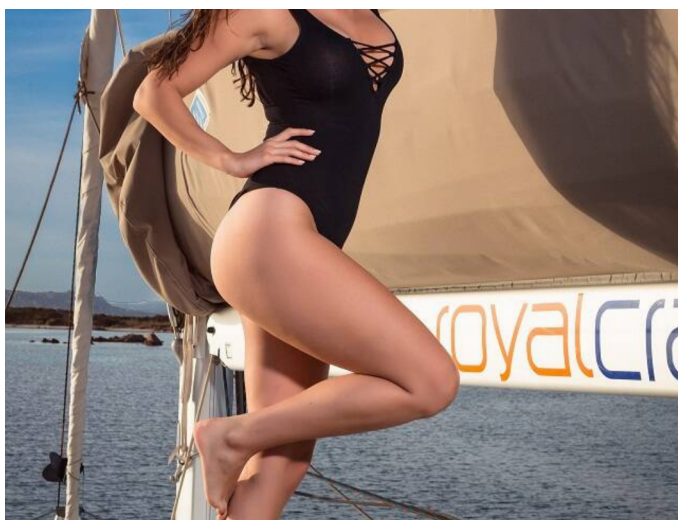
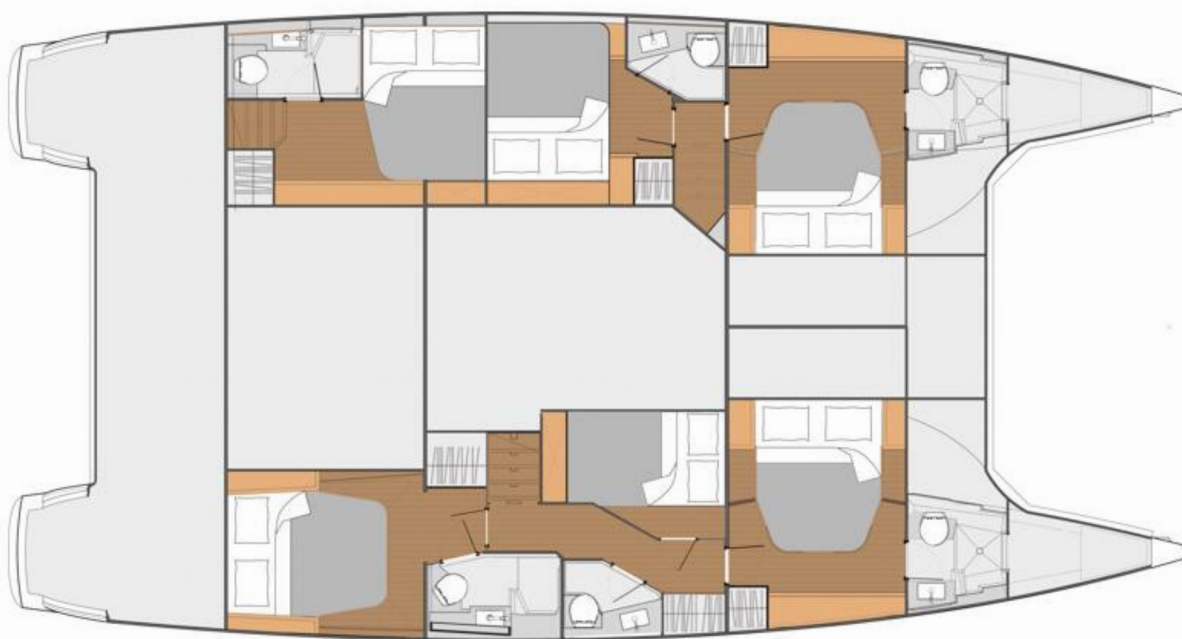
Year of build	Length	Berths	Cabins	Engine x 2	Fuel tank
2016	14.98 m	12	6 + 1	75 hp	940 l
Draft	Beam	WC	Water tank	Mainsail	Headsail
1.25 m	7.99 m	6	700 l	full batten	furling/roll

[CLICK HERE FOR MORE INFORMATION](#)

or scan the following QR code >



Comfort	✓ Beach towel   ✓ Bed linen   ✓ Towels
Deck	✓ Bimini top   ✓ Cockpit full tent   ✓ Cockpit/stern, outside shower   ✓ Davit ✓ Flybridge   ✓ Grill/Barbecue/Plancha   ✓ Outboard engine   ✓ Teak deck
Entertainment	✓ Bose Sound System   ✓ Donut   ✓ Fusion radio   ✓ LCD TV   ✓ RIB ✓ SEA-DOO underwater scooter   ✓ Snorkeling equipment ✓ Stand up paddle (SUP)   ✓ Underwater lights   ✓ Water skis   ✓ Water toys ✓ Wi-Fi Internet
Galley	✓ Coffee machine   ✓ Dishwasher   ✓ Gas bottles   ✓ Ice maker ✓ Kitchen utensils (Galley equipment, cutlery)   ✓ Microwave   ✓ Oven ✓ Refrigerator
Interior	✓ Convertible table in salon   ✓ Electric fans in cabins   ✓ Electric toilet   ✓ Safe
Navigation	✓ Autopilot   ✓ GPS chart plotter   ✓ GPS chart plotter - cockpit ✓ Logge/Lot/Speed/Wind   ✓ Radar
Safety	✓ Life belts (Safety harness)   ✓ Life jackets   ✓ Liferaft   ✓ Safety equipment ✓ VHF radio
Sails	✓ Electric winch   ✓ Lazy bag   ✓ Lazy jacks
Yacht electrics	✓ Air Conditioning   ✓ Bilge pump - Electric   ✓ Generator   ✓ Heating ✓ Inverter   ✓ Solar panels   ✓ Watermaker - desalinator









**Check prices and availability**

**CLICK HERE**

# We love having you on board!

**DISCLAIMER** This document is not contractual. All specifications are given in good faith and offered for informational purposes only. Yacht inventory, specifications and charter prices are subject to change without prior notice.